



Shown in Prairie elevation

# Trireme

1651 sq. ft.

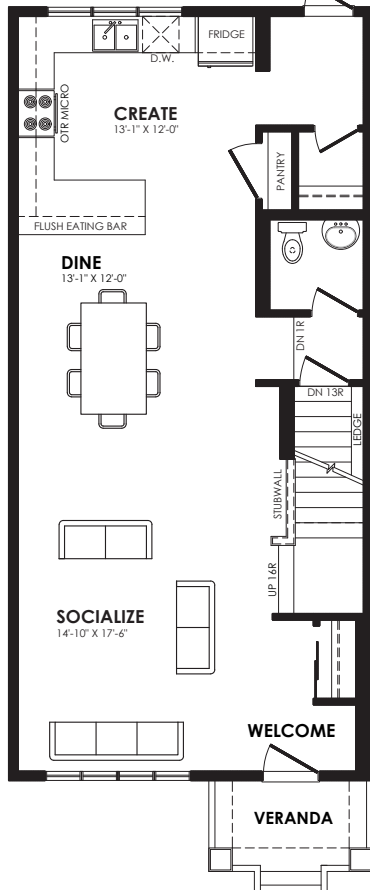
Essence Specification

### Specs

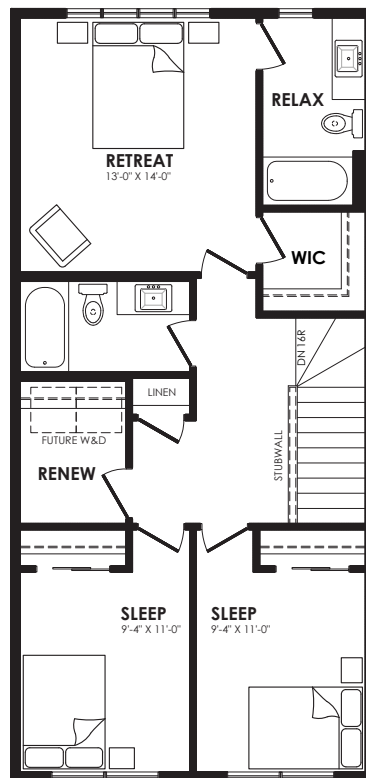
Width of House	20 ft.
Main Floor	850 sq. ft.
Second Floor	801 sq. ft.
Basement	696 sq. ft.

### Details

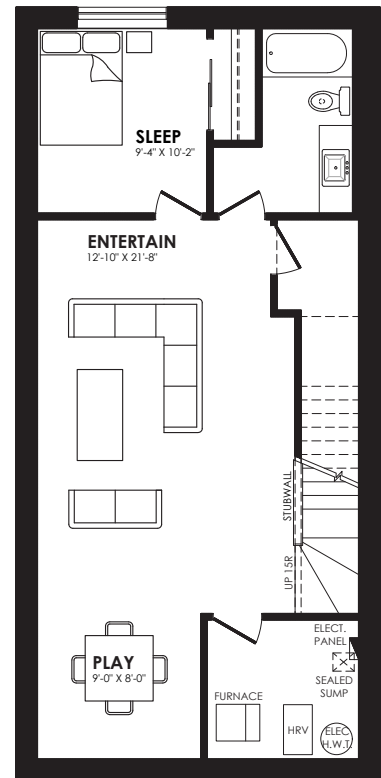
Style	2 Storey Single Family
Bedrooms	3
Bathrooms	2.5
Garage (Optional)	Double Detached 20' x 20'



Main floor plan



Second floor plan



Basement option

# Trireme options



Standard



Colonial



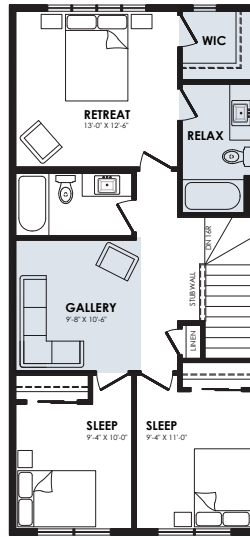
Prairie



Craftsman

## Elevation options

Square footage, layout options and window locations may change with elevation changes.

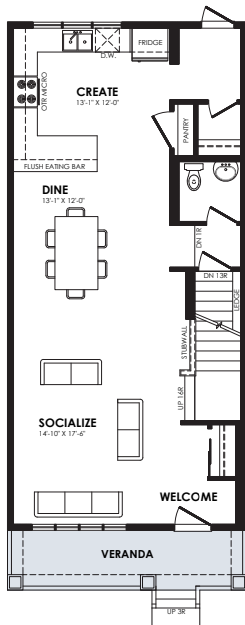


Loft option  
(must be used with alternative main floor laundry option)

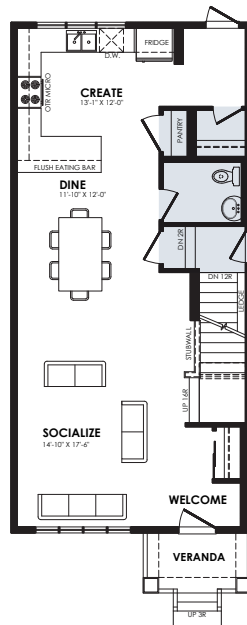


Front primary

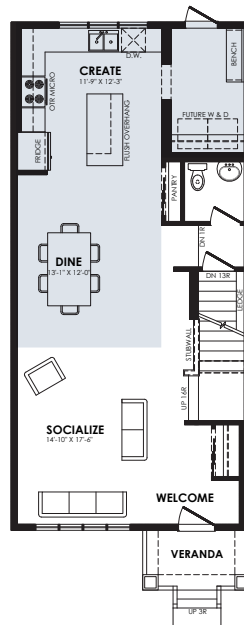
## Second floor options



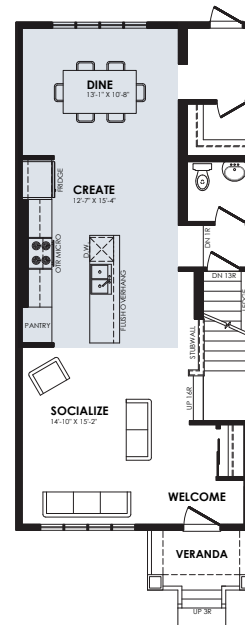
Full Veranda



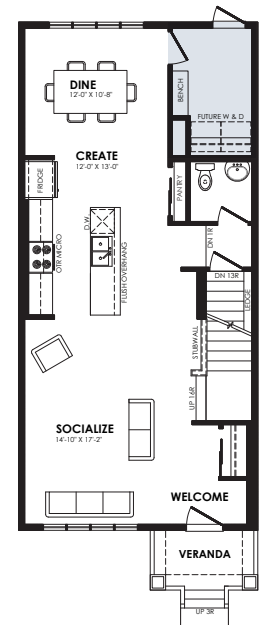
Side entry



Rear kitchen with island and main floor laundry



Centre Kitchen



Centre kitchen with main floor laundry

## Main floor options

### Home Price

(including house, lot and GST) Lot no. \_\_\_\_\_

Please note that elevations and renderings are a guideline only. Architectural requirements or restrictions may differ per subdivision. Exterior upgrade options are available.

