



Shown in Prairie elevation

Trireme

1651 sq. ft.

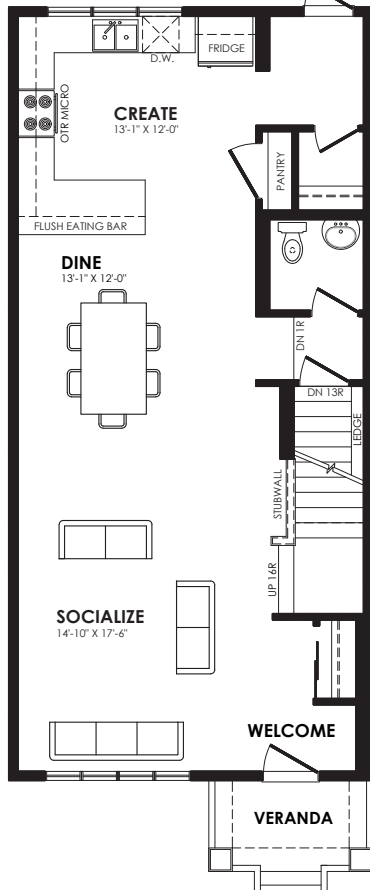
Essence Specification

Specs

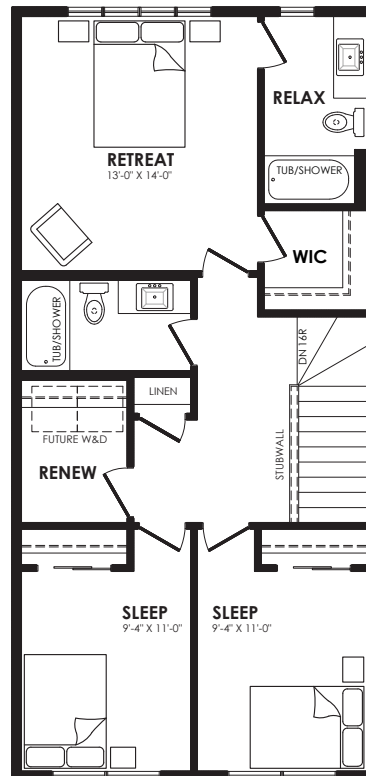
Width of House	20 ft.
Main Floor	850 sq. ft.
Second Floor	801 sq. ft.
Basement	696 sq. ft.

Details

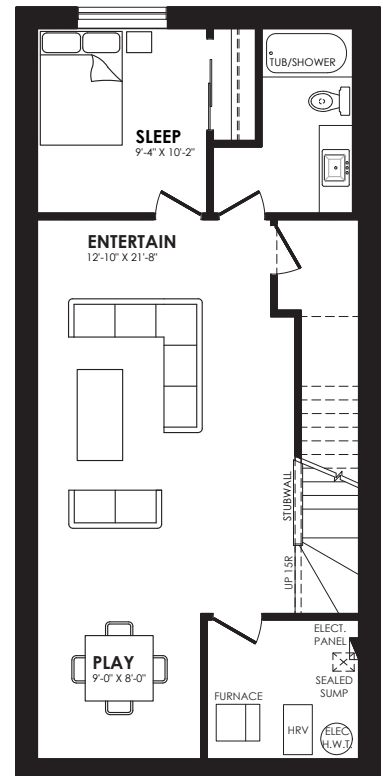
Style	2 Storey Single Family
Bedrooms	3
Bathrooms	2.5
Garage (Optional)	Double Detached 20' x 20'



Main floor plan



Second floor plan



Basement plan

Trireme options



Standard



Colonial



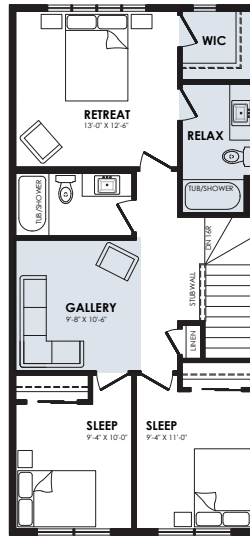
Prairie



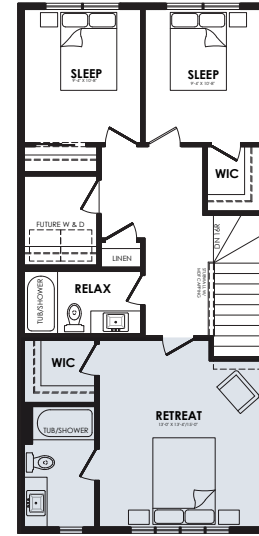
Craftsman

Elevation options

Square footage, layout options and window locations may change with elevation changes.

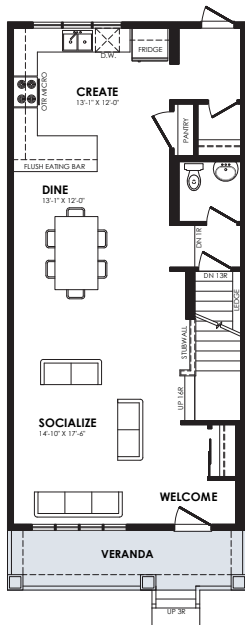


Loft option
(must be used with alternative main floor laundry option)

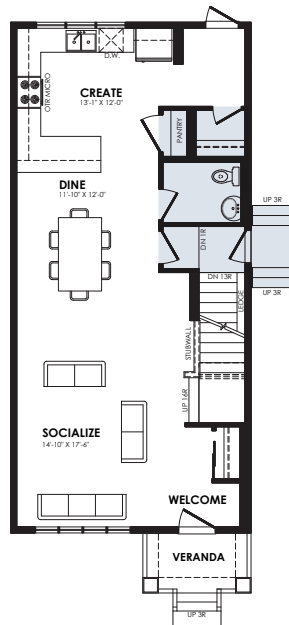


Front primary

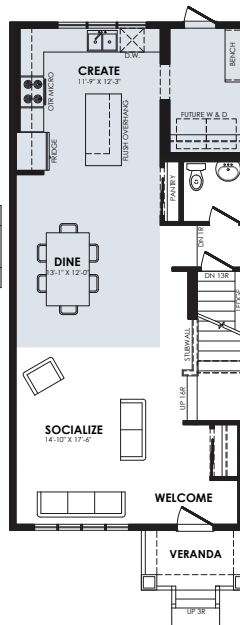
Second floor options



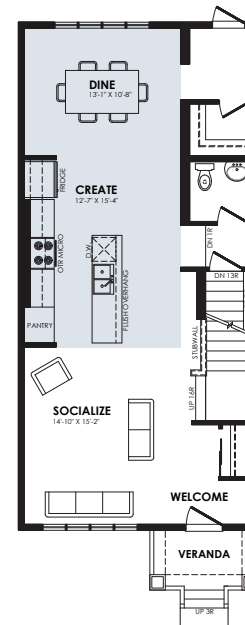
Full Veranda



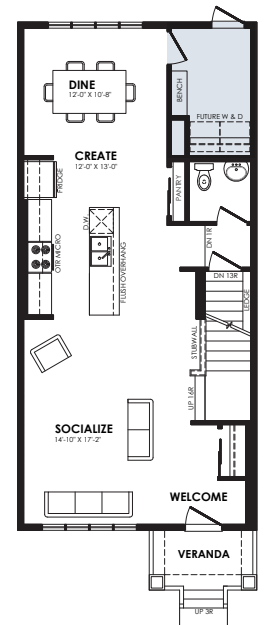
Side entry



Rear kitchen with island and main floor laundry



Centre Kitchen



Centre kitchen with main floor laundry

Main floor options

Home Price

(including house, lot and GST) Lot no. _____

Please note that elevations and renderings are a guideline only. Architectural requirements or restrictions may differ per subdivision. Exterior upgrade options are available.

